



Product Information

10-245kDa Wide Range 3 Color Prestained Protein Ladder

Product information for BG00364:

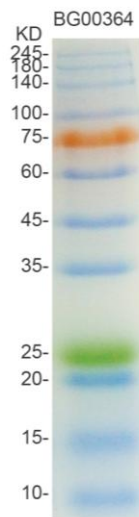
Description

The 10-245kDa Wide Range 3 Color Prestained Protein Ladder is a three-color protein standard with 12 pre-stained proteins covering a wide range molecular weights from 10 to 245kDa. Proteins are covalently coupled with a blue chromophore except for two reference bands (one green and one red band at 25kDa and 75kDa respectively) when separated on SDS-PAGE (Tris-glycine buffer). The 10-245kDa Wide Range 3 Color Prestained Protein Ladder is designed for monitoring protein separation during SDS-polyacrylamide gel electrophoresis, verification of Western transfer efficiency on membranes (PVDF, nylon, or nitrocellulose) and for approximating the size of proteins. The ladder is supplied in gel loading buffer and is ready to use.

Range

10kDa to 245kDa

Number of Bands: 12



Package: 500ul

Application

- 3µl or 5µl per loading for clear visualization during electrophoresis on 15-well or 10-well mini gel, respectively.
- 1.5~2.5µl per well for general Western transferring.
- Apply more for thicker (> 1.5 mm) or larger gel.

Contents

Approximately 0.1~0.4 mg/ml of each protein in the buffer (20 mM Trisphosphate, pH 7.5 at 25°C), 2 % SDS, 0.2 mM Dithiothreitol, 3.6 M Urea, and 15 % (v/v) Glycerol).



Bio Basic Inc.

A world leader in serving science

Quality Control

Under suggested conditions, the 10-245kDa Wide Range 3 Color Prestained Protein Ladder resolves 12 major bands in 15% SDS-PAGE (Tris-glycine buffer) and after Western blotting to nitrocellulose membrane.

Storage

Stable for up to 2 weeks at 25°C.

Stable for up to 3 months at 4°C. For long term storage, store at -20°C.