



PRODUCT INFORMATION

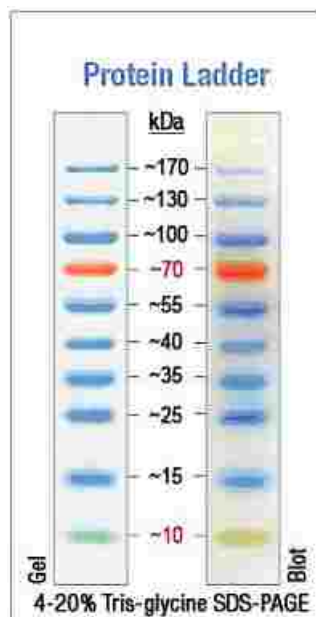
Wide Range Protein Molecular Weight Marker Prestained

Product information for BSM0671:

Description

BBI Wide Range Protein Molecular Weight Prestained Marker is designed for monitoring protein separation during SDS-polyacrylamide gel electrophoresis, verification of Western transfer efficiency on PVDF, nylon and nitrocellulose membranes and for approximate sizing of proteins. It is composed of prestained recombinant prokaryotic proteins.

BBI Wide Range Protein Molecular Prestained Weight Marker is a 3-color ladder with 10 proteins covering a molecular weight range from 10 to 170 kDa. The ladder contains one orange reference band at 70 kDa and one green band at 10 kDa.



Applications

Monitoring protein migration during SDS-polyacrylamide gel electrophoresis.
Monitoring protein transfer onto membranes after Western blotting.
Sizing of proteins on SDS-polyacrylamide gels and Western blots.



Storage Buffer

62.5 mM Tris-H₃PO₄ (pH 7.5 at 25°C), 1 mM EDTA, 2% SDS, 10 mM DTT, 1 mM NaN₃ and 33% glycerol.

Recommendations for Loading

1. Thaw the ladder either at room temperature for a few minutes to dissolve precipitated solids.
Do not boil!
2. Mix gently, but thoroughly, to ensure that the solution is homogeneous.
3. Load the following volumes of the ladder on a SDS-polyacrylamide gel:
 - 5 µl per well for a mini gel
 - 10 µl per well for a large gel

Use the same volumes for Western blotting. The loading volumes listed above are recommended for gels with a thickness of 0.75-1.0 mm. The loading volume should be doubled for 1.5 mm thick gels.

Notes

1. Each lot of the BBI Wide Range Protein Molecular Weight Prestained Marker is calibrated against the Unstained Protein Ladder and calculated apparent molecular weights are reported in the picture.
2. Prestained proteins can have different mobilities in various SDS-PAGE-buffer systems. However, they are suitable for approximate molecular weight determination when calibrated against unstained standards in the same system. See reverse page for migration patterns in different electrophoresis conditions.
3. For precise molecular weight determinations use the Unstained Protein Ladder (BSM0661).
4. In 8 or 10% gels, low molecular weight proteins may migrate with the dye front.
5. The Prestained Protein Ladder can be used in Western blotting with all common membranes: PVDF, nylon and nitrocellulose.
6. Longer transfer times or higher transfer voltages may be required for Western blotting of large (>100 kDa) proteins.

Storage

Stable at 4°C for up to 3 months. For long term storage, store at -20°C.