



Product Information

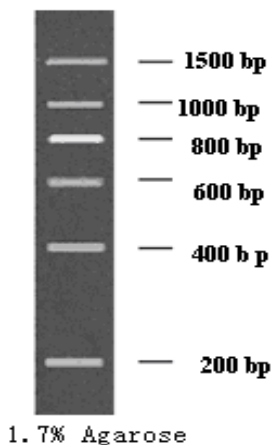
Catalogue Number: GM337/GM338

Product Name: 200-1500 bp DNA Marker, Ready-to Use

Size: 50 loadings (300ul)/ 5x50 loadings (5x300ul)

Description: 200~1500bp DNA Marker E, ready-to-use, contains a mix of 6 individual DNA fragments (in base pairs): **200, 400, 600, 800, 1000, 1500bp**, with 800bp as reference.

Usage: 6ul /load containing 75ng of each DNA fragments and 150ng of 800bp band.



Storage: -20°C

Storage Buffer

10 mM Tris-HCl (pH 7.6),
10 mM EDTA,
0.033% Bromophenol Blue,
0.008% xylene cyanol FF
and 10% glycerol.

Quality Control Assay Data

Analysis of 0.5µg of the DNA Ladder on agarose gel by ethidium bromide staining generates 6 discrete bands pattern.

RECOMMENDATIONS FOR USE

- Do not heat before loading.
- Apply 6ul marker to 5mm width lane (1.2 µl per 1mm lane) agarose gel or non-denaturing PAGE.



- Following electrophoretic separation on gels, visualize the DNA bands by ethidium bromide staining.
- Not designed for DNA quantification.
- Not designed for denaturing PAGE.
- Qualified agarose and fresh TAE (TBE) buffer is essential to the good photo.

References

- Stellwagen, N.C., Anomalous electrophoresis of deoxyribonucleic acid restriction fragments on polyacrylamide gels, *Biochemistry*, 22, 6186-6193, 1983.
- Stellwagen, N.C., Conformational isomers of curved DNA molecules can be observed by polyacrylamide gel electrophoresis, *Electrophoresis*, 21, 2327-2334, 2000.

Product Use limitation

This Product is developed, designed and sold exclusively for research purposes and in vitro use only. The product was not tested for use in diagnostics or for drug development, nor is it suitable for administration to human or animal.