

**BIO BASIC<sup>®</sup>****Your Supplier and Manufacturer of  
Life Science Products and Services**

## Product information

### Protein Ladder (10-175kDa, wide range, Prestained)

**Catalog #:** BG00363  
**Size:** 100 loadings (500ul)  
**Storage:** -20°C  
**Transportation:** Ambient Temperature (stable)

#### Description:

BG00363 Wide Range Protein Marker/Ladder consists of **11 proteins** that resolve into sharp, tight bands in the **range of 10-175 kDa**. This unique protein ladder allows you to monitor protein separation during electrophoresis, estimate molecular weight of the protein of interest, and evaluate western blot transfer efficiency. It also includes **~10, ~40 and ~90 kDa reference bands** coupled with blue dye that allow easy tracking and identification.

**Range:** 10-175 kDa.

**No. of Bands:** 11.

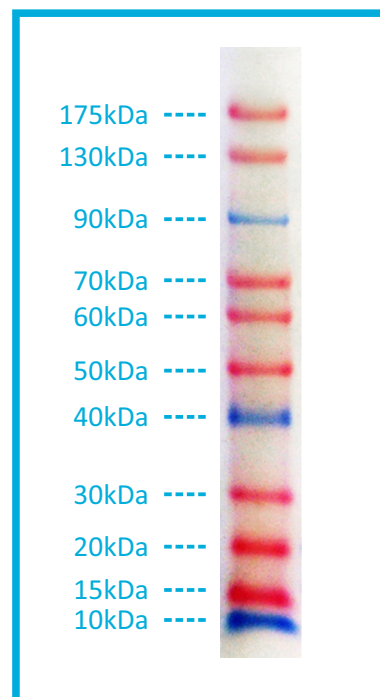
Color	Tris-Glycine	Bis-Tris (MOPS)	BIS-TRIS (MES)
Ruby	175	165	165
Ruby	130	120	125
Blue	90	80	82
Ruby	70	61	62
Ruby	60	52	55
Ruby	50	42	45
Blue	40	32	34
Ruby	30	24	26
Ruby	20	17	16
Ruby	15	13	12
Blue	10	10	7

#### Loading:

- 3 µl or 5 µl per loading for clear visualization during electrophoresis on 15-well or 10-well mini-gel, respectively.
- 1.5-2.5 µl per well for general Western transferring.
- Apply more for thicker (> 1.5 mm) or larger gel.

#### Storage:

-20°C for 24 months.  
4°C for 3 months.  
25°C for 2 weeks.



*Tris-glycine buffer 4-20%*