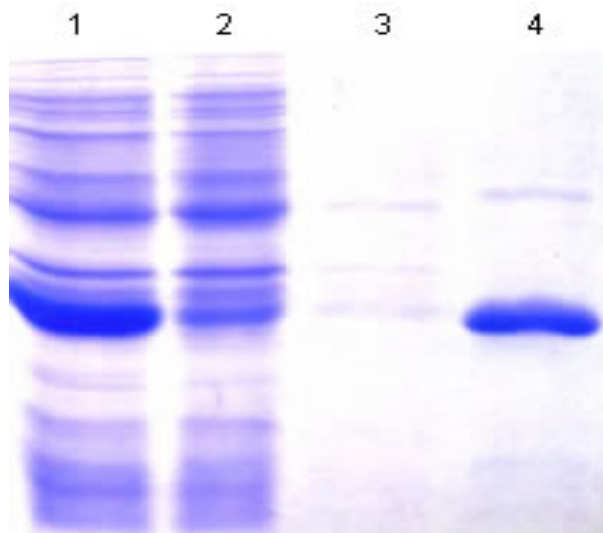




Certificate of Analysis

Catalog: BSP031:	GST Sefinose™ Resin
Report Date:	2011.4.28
Quantity:	500ml(settled)
Batch Number:	SG04.02
Average bead size:	50 µm
Protein binding capacity:	Approx.5-10 mg GST fusion protein/1ml resin
Max flow velocity:	300cm/h.
Ligand density:	10-20umol/ml GST resin.
pH stability, short-term (2 h):	3-12
Analyst:	W. Gao

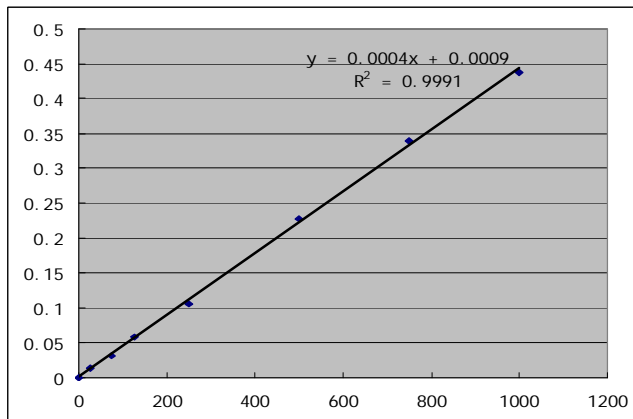
Binding Selection and Capacity of GST Sefinose™ Resin



Shown above is detection of the binding capacity of High-Affinity GST Sefinose™ resin using GST fusion protein. Whole proteins (Lane1) were passed through GST Sefinose™. The flow-through (Lane2) contains most of the total proteins from E.coli. After wash (Lane3), GST fusion protein (Lane4) was eluted. use Binding/wash buffer: BSP032-6(BBI) and Elution buffer: BSP032-5(BBI).



Protein Binding Capacity of GST Sefinose™ Resin



Use 1ml gravity column (BSP091-1), apply soluble E.coli sample containing GST fusion protein to the column. Collect and save the flow-through for analysis. Aliquot and run flow-through on SDS-PAGE electrophoresis or via quick Protein Assay for detection of GST fusion protein. Elute the GST fusion protein from GST Sefinose™ resin in 8ml elution buffer. Plot BSA standard curve (Better BCA Protein Assay Kit, SK3051 above picture) according to standard curve. Typical yield for 1ml resin is 8.26 mg GST fusion protein.